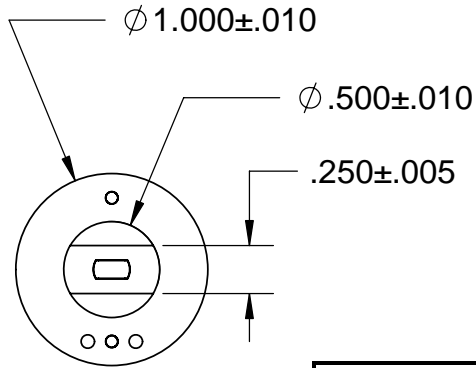
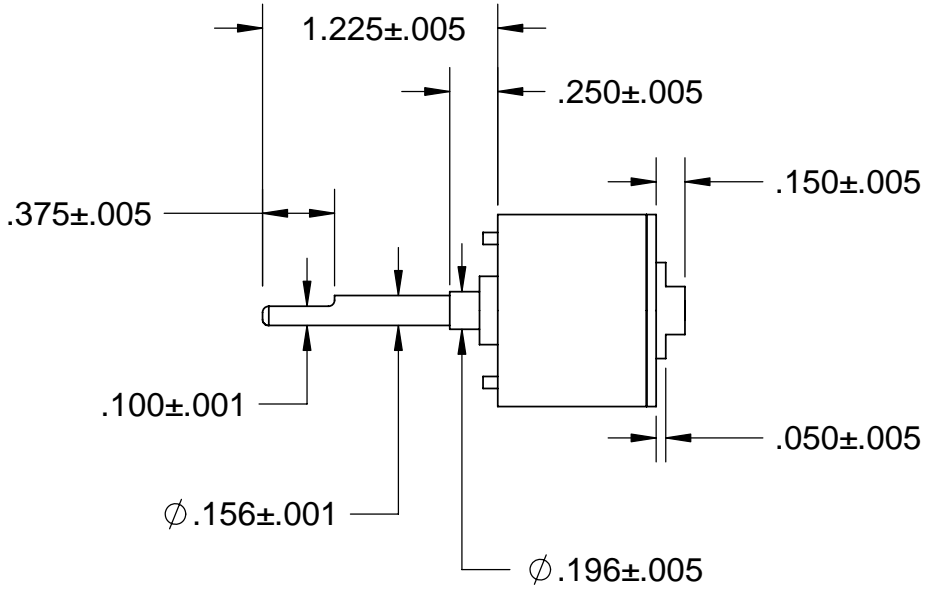
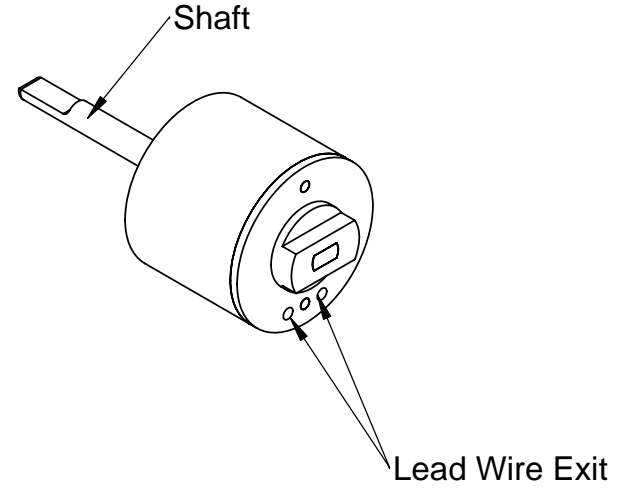
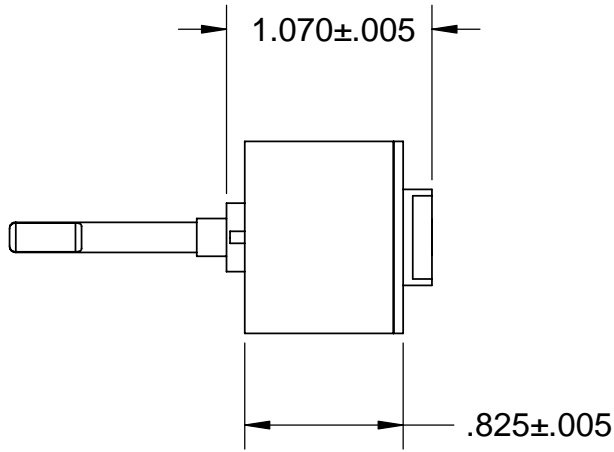


These drawings and specifications are the property of H2W Technologies, Inc. They are issued in confidence and shall not be reproduced, copied, or used without written permission from H2W Technologies, Inc. (www.h2wtech.com)



SPECIFICATIONS	
Model Number:	TMR-010-002-2H
Constant Torque Angular Displacement:	10 degrees
Resistance:	2.3 ohms
Total Weight:	50 grams
Continuous Torque:	2 in-oz
Peak Torque:	6 in-oz
Motor Constant:	1.00 in-oz/sqrt(watts)

RELEASED FOR MFG.			
DATE	9-12-05		
BY	<i>Central</i>		
MATERIAL			
FINISH			
DRAWN	DATE	APPROVED	DATE
JRM	9-12-05	MPW	9-12-05

H2W Technologies, Inc.		
28310-C Ave Crocker Valencia, CA 91355 USA		
Tel: (661)-702-9346 Fax: (661)-702-9348		
www.h2wtech.com		
TMR-010-002-2H		
DWG #	REV	SHEET
80-0112		1 of 1

UNLESS SPECIFIED OTHERWISE:
 All dimensions are in inches
 Standard Tolerances are as follows
 .XXX ±.005 ANGLES ±1°
 .XX ±.010 FILLETS .010
 X ±.020 CORNERS .010
 Remove All Burrs and Sharp Edges